



Alpine-Western Balkan
rail freight corridor



Co-financed by the European Union
Connecting Europe Facility

ANNUAL REPORT 2024

2. ACTIVITIES

2.1. Capacity management

The Corridor One-Stop-Shop (C-OSS) facilitates train path management for international rail freight along the AWB RFC.

The C-OSS serves as a single contact or entry point for rail freight customers on the corridor. It allows customers to check, request and get clarifications and answers about the infrastructure capacity for international freight trains along the route. The C-OSS offers Pre-arranged Train Paths (PaPs).

Capacity offer for Timetable 2024/2025

The PaP Catalogue for Timetable 2025 was published on 8th January 2024 on the AWB RFC's website and was also accessible in the RNE Path Coordination System (PCS) for orders.

Twelve Pre-arranged Paths were offered for the timetable period 2024/2025

PaP ID	Direction		PaPs offer PATH NR (National ID) for TT 2024/2025				
	Symbol	N-S / S-N	ÖBB-I	SZ-I	HZ-I	IŽS	NRIC
C10NP5SALjM1	→	N-S	81421	60107			
C10NP5BRljZ2	←	S-N		60100	70910	73000	10012
C10NP5WEMT3	→	N-S	82401	60109			
C10NP5SVJE4	←	S-N		60102	70912	73002	10014
C10NP5LjZBR5	→	N-S		60103	70913	73001	10011
C10NP5RKLjZ6	←	S-N		60105	70970		
C10NP5LjZRK7	→	N-S		60104	70971		
C10NP5LjMSA8	←	S-N	81422	60106			
C10NP5SASV9	→	N-S	81423	60101	70911	73003	10013
C10NP5MTWE10	←	S-N	82400	60108			
C10NP5BRSV11	→	N-S				73001	10011
C10NP5SVBR12	←	S-N				73000	10012

Overview of offered PaPs with routes, running days and kilometres for TT 2024/2025

Direction	PaPs offer route TT 2024/2025								
	Route	M	T	W	T	F	Sa	Su	Offered km
S-N	Ljubljana Moste – Salzburg Hbf	x	x	x	x	x			124.334,60
	Maribor Tezno - Wels Hbf	x	x	x	x	x			85.748,00
	Zagreb RK – Ljubljana Zalog	x	x	x	x	x	x	x	51.662,52
	Beograd Ranžirna – Ljubljana Zalog	x	x	x	x	x	x	x	202.722,52
	Svilengrad - Beograd Ranžirna	x	x	x	x	x	x	x	258.323,52
	Svilengrad – Jesenice	x							69.602,52
N - S	Salzburg Hbf – Ljubljana Moste	x	x	x	x	x			124.334,60
	Wels Hbf - Maribor Tezno	x	x	x	x	x	x		102.897,60
	Ljubljana Zalog - Zagreb RK	x	x	x	x	x	x	x	50.770,72
	Ljubljana Zalog – Beograd Ranžirna	x	x	x	x	x	x	x	202.773,48
	Beograd Ranžirna - Svilengrad	x	x	x	x	x	x	x	258.323,52
	Salzburg Hbf.– Svilengrad					x			91.007,80
Total offered PaPs km for TT2024/2025									1.622.501,40

Geographical overview of offered PaPs for TT 2024/2025



PaP requests for Timetable 2024/2025

Eight requests with total of 417.249,92 kilometres for train paths on the AWB RFC were submitted in April 2024.

Requested train paths for TT 2024/2025	No. of running days	Requested km
Salzburg Hbf – Ljubljana Moste	4	42.082,48
Ljubljana Moste – Salzburg Hbf	4	42.082,48
Wels Hbf - Maribor Tezno	6	102.897,60
Maribor Tezno - Wels Hbf	5	85.748,00
Ljubljana Zalog - Šid	2	45.661,20
Šid - Ljubljana Zalog	2	45.646,64
Rosenbach - Šid	1	26.569,40
Šid - Jesenice	1	26.562,12
Total requested PaPs km for TT2024/2025		417.249,92

Reserve Capacity

Reserve Capacity (RC) on AWB RFC was offered as a guaranteed contingent of capacity slots and international freight paths per day and section (flexible RC approach), which applicants may request up to 30 days prior to a train run. On 14th October 2024 the AWB RFC published Reserve Capacity for TT 2024/2025 as a guaranteed contingent of capacity slots and international freight paths.

Four Reserve Capacity train paths were offered for the timetable period 2024/2025

PaP ID	Direction		RC offer PATH NR (National ID) for TT2024/2025			
	Symbol	N-S / S-N	SZ-I	HZ-I	IŽS	NRIC
C10RC5LjZBR1	→	N-S	60103	70915	73001	
C10RC5BRLjZ2	←	S-N	60100	70914	73000	
C10RC5BRsv3	→	N-S			73001	10011
C10DOMTRC4	←	S-N			73000	10012

Overview of offered RC with routes, running days and kilometres for TT 2024/2025

Direction	RC offer for TT 2024/2025								
	Route	M	T	W	T	F	Sa	Su	Offered km
S-N	Svilengrad - Beograd Ranžirna	x	x	x	x	x	x	x	258.323,52
	Beograd Ranžirna - Ljubljana Zalog		x	x		x	x	x	155.669,80
N - S	Ljubljana Zalog - Beograd Ranžirna	x	x		x	x		x	155.706,20
	Beograd Ranžirna - Svilengrad	x	x	x	x	x	x	x	258.323,52
Total offered RC km TT2024/2025									828.023,04

2.5. Performance Management

According to Article 19 (2) of Regulation (EU) 913/2010 concerning a European rail network for competitive freight, the Management Board has to monitor the performance of rail freight services and publish the results once a year.

To facilitate the fulfilment of this obligation, RNE developed a first set of KPIs that are commonly applicable to all RFCs. These KPIs were included in the RNE Guidelines for Performance Indicators of Rail Freight Corridors.

These KPIs were developed by RNE and are divided into three groups:

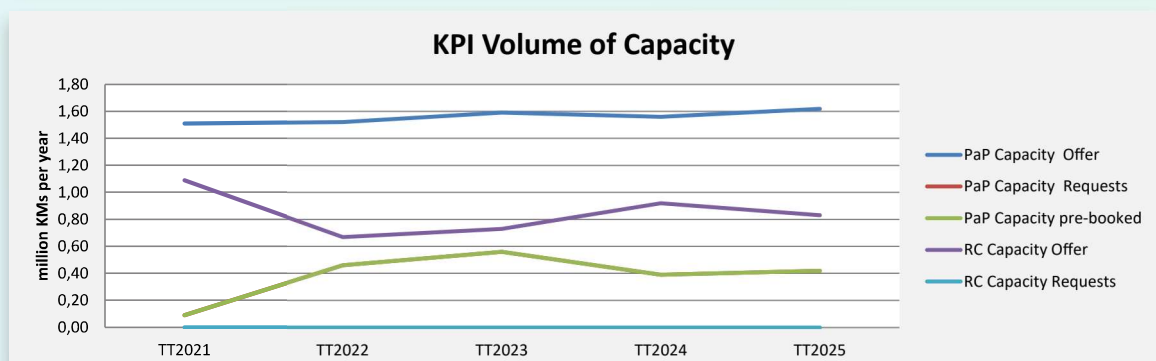
- Capacity management (volume of PaP's offered, requested, pre-booked, allocated RFC, average planned speed)
- Operations punctuality origin, at destination, total number of trains on the RFC
- Market development (total number of freight trains, train-kms of trains crossing a border along the RFC, trains per border and ratio between allocated trains via C-OSS and total allocated trains on RFC)

AWB RFC Key Performance Indicators (KPIs) for TT 2024/2025

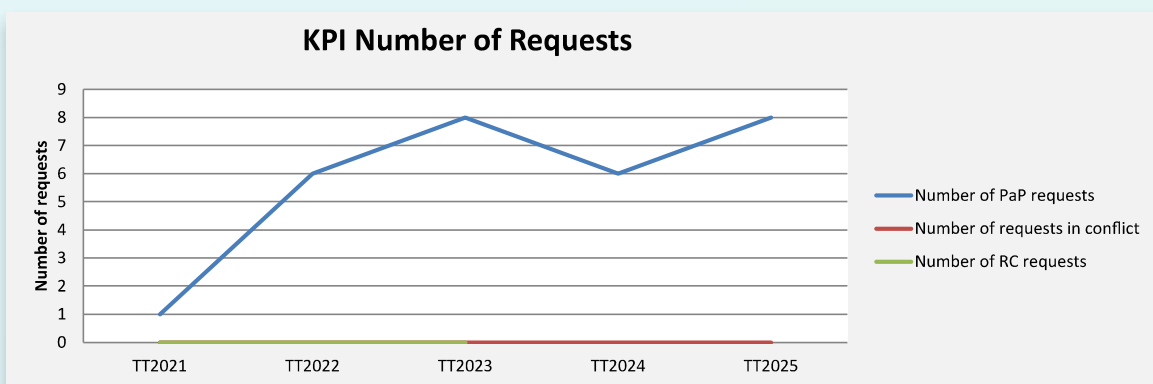
- PaP Capacity Offer 1,62 million path km
- PaP Capacity Requests 0.42 million path km
- PaP Capacity pre-booked 0.42 million path km
- Number of PaP requests 8

The AWB RFC Key Performance Indicators (KPIs) for TT 2024/2025 are also available on the RNE website.

RFC10	TT2021	TT2022	TT2023	TT2024	TT2025
PaP Capacity Offer	1,51	1,52	1,59	1,56	1,62
PaP Capacity Requests	0,09	0,46	0,56	0,39	0,42
PaP Capacity pre-booked	0,09	0,46	0,56	0,39	0,42
RC Capacity Offer	1,09	0,67	0,73	0,92	0,83
RC Capacity Requests	0,00	0,00	0,00	0,00	0,00

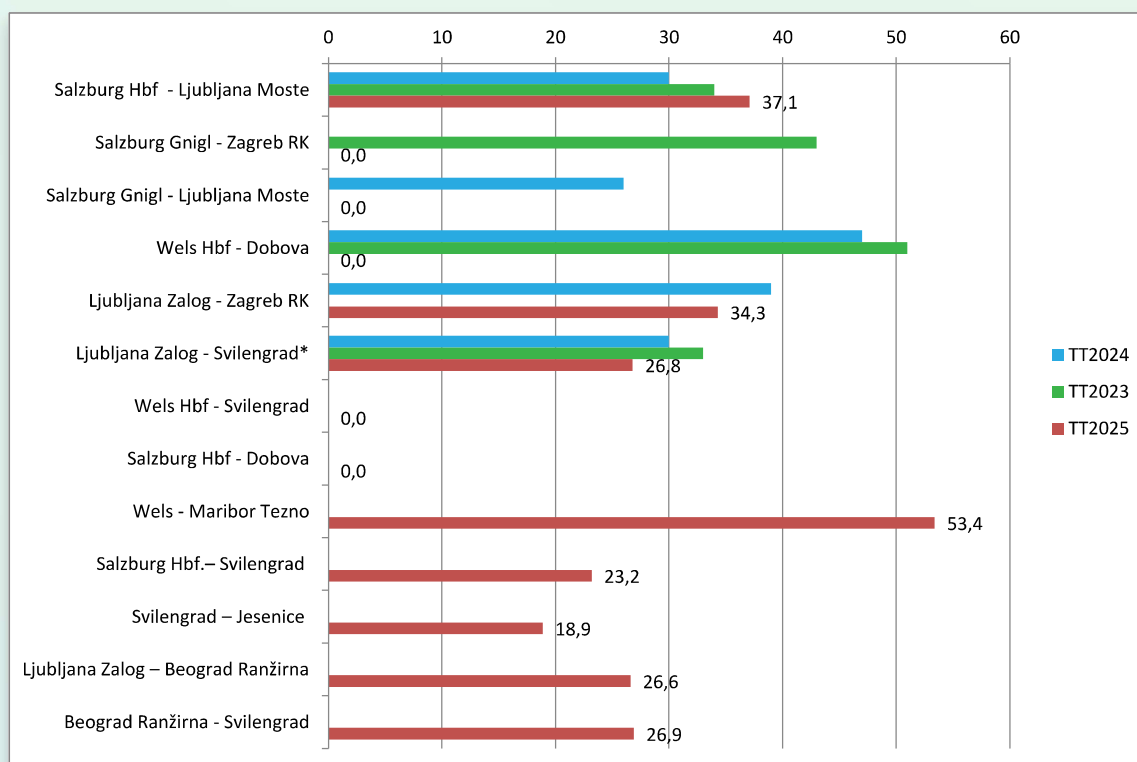


RFC10	TT2021	TT2022	TT2023	TT2024	TT2025
Number of PaP requests	1	6	8	6	8
Number of requests in conflict	0	0	0	0	0
Ratio of pre-booked Capacity	6,0%	30,3%	35,2%	25,0%	25,9%
Number of RC requests	0	0	0		



The average commercial speed of PaPs for TT 2024/2025 compared with TT2023/2024 and TT2022/2023

RFC10 section	Distance (km)	Countries involved	TT2023	TT2024	TT2025
Salzburg Hbf - Ljubljana Moste	294,6	2	34,0	30,0	37,1
Salzburg Gnigl - Zagreb RK	438,9	3	43,0	N/A	N/A
Salzburg Gnigl - Ljubljana Moste	292,0	2	N/A	26,0	N/A
Wels Hbf - Dobova	464,7	2	51,0	47,0	N/A
Ljubljana Zalog - Zagreb RK	139,5	2	N/A	39,0	34,3
Ljubljana Zalog - Svilenograd*	1266,7	4	33,0	30,0	26,8
Wels Hbf - Svilenograd	1626,8	5	N/A	N/A	N/A
Salzburg Hbf - Dobova	406,5	2	N/A	N/A	N/A
Wels - Maribor Tezno	329,8	2	N/A	N/A	53,4
Salzburg Hbf.– Svilenograd	1750,2	5	N/A	N/A	23,2
Svilenograd – Jesenice	1338,5	4	N/A	N/A	18,9
Ljubljana Zalog – Beograd Ranžirna	557,1	3	N/A	N/A	26,6
Beograd Ranžirna - Svilenograd	709,7	2	N/A	N/A	26,9



The average commercial speed of PaPs for TT 2024/2025 compared with TT2023/2024 and TT2022/2023

RFC10 Alpine-Western Balkan	2021	2022	2023	2024
Punctuality at origin (≤30 minutes)	52,0%	46,0%	48,0%	51,0%
Punctuality at destination (≤30 min.)	40,0%	36,0%	39,0%	42,0%
Punctuality at origin (≤15 minutes)	44,0%	39,0%	42,0%	44,0%
Punctuality at destination (≤15 min.)	35,0%	32,0%	34,0%	38,0%
Number of trains crossing a border along the RFC	16.404	28.830	30.052	32.611
Train-kms of trains crossing a border along the RFC	N/A	N/A	11.429.706	14.552.670

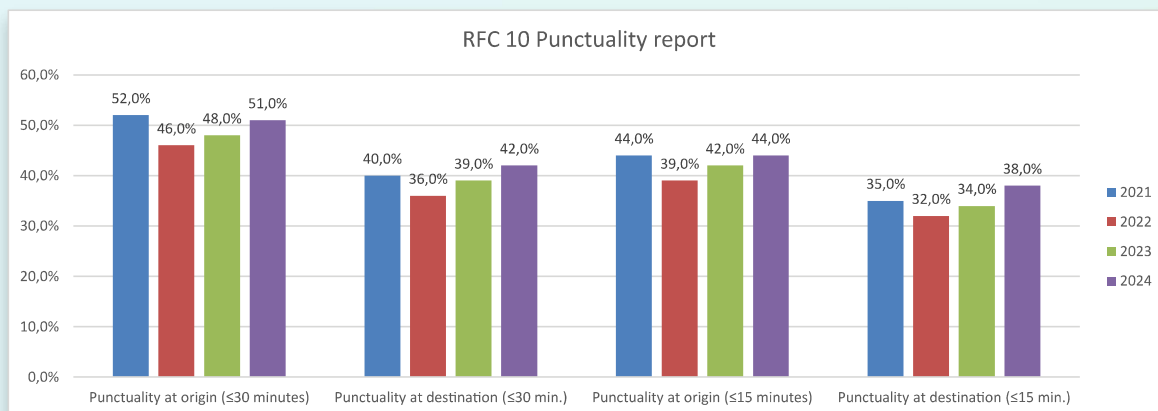
RFC10 Alpine-Western Balkan	2020	2021	2022	2023	2024
Trains per border: Total AT - SI	15.316	14.718	18.296	14.964	15.528
Trains per border: Total SI - HR	7.300	7.161	7.058	7.245	8.408
Trains per border: Total HR - RS	3.848	3.816	4.638	4.132	4.762
Trains per border: Total RS - BG	3.274	3.368	4.090	3.711	3.913

NOTE:

In green: Figures obtained from TIS

In blue: combined data TIS & national system

In orange: Figures obtained from national system



The ratio of capacity allocated by C-OSS for Timetable 2024/2025 compared to previous years

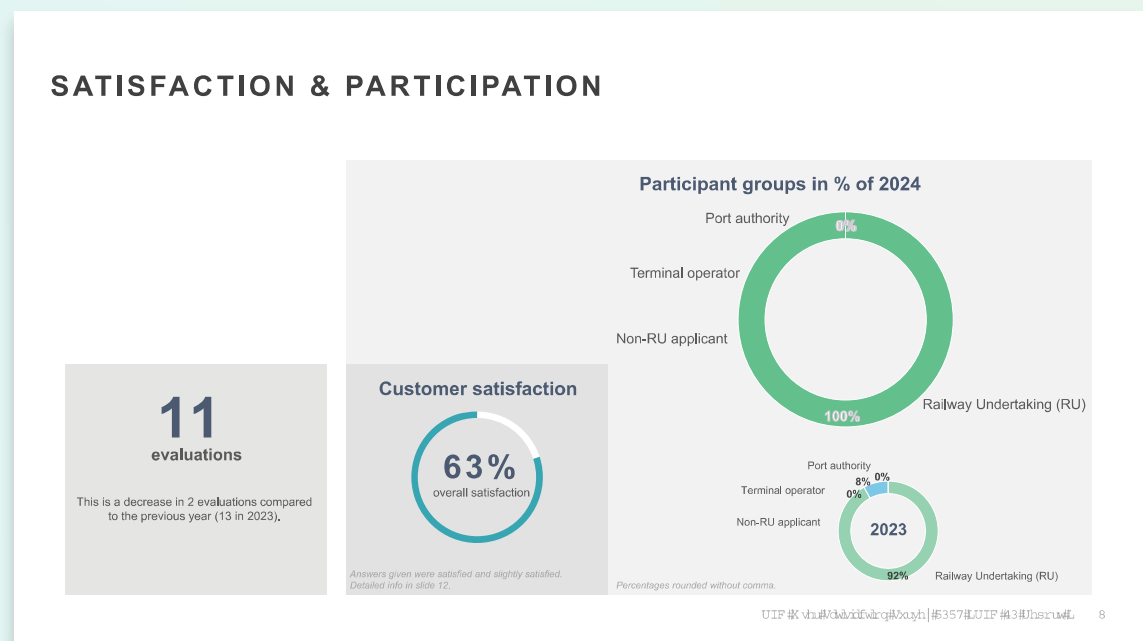
The ratio of allocated trains by the C-OSS compared to all allocated trains on the Alpine – Western Balkan RFC

Between member states		Between operational points		RFC(s) Involved	Allocated by C-OSS 2022 (for TT 2023)	Allocated by C-OSS 2023 (for TT 2024)	Allocated by C-OSS 2024 (for TT 2025)
Austria	Slovenia	Rosenbach	Jesenice	RFC 10	4,4%	4,6%	1,6%
Austria	Slovenia	Spielfeld-Straß	Šentilj	RFC 5	9,8%	10,2%	11,6%
				RFC 10			
Serbia	Bulgaria	Dimitrovgrad	Kalotina Zapad	RFC 10	0,0%	0,0%	0,0%
Slovenia	Croatia	Dobova	Savski Marof	RFC 6	15,0%	11,6%	12,6%
				RFC 10			
Croatia	Serbia	Tovarnik	Šid	RFC 10	2,0%	1,0%	1,6%

2.6. Customer Satisfaction

Periodic monitoring of the customer satisfaction with the corridor work is defined in the RFC Regulation (Regulation (EU) 913/2010). As in the past three years, the AWB RFC participated in the User Satisfaction Survey (USS) for 2024 under the umbrella of the RFC Network. The results of the survey were published in December 2024 on the AWB RFC website (link: Documents | AWB RFC (rfc-awb.eu)) and also on RNE's Customer Information Platform (CIP) (link: <https://cip-online.rne.eu>).

Overall satisfaction of the customers is shown in the below figures



From the conducted survey the following results can be highlighted:

Slightly decrease of response rate compared to the previous year (from 13 in 2023 to 11 in 2024). Positive feedback was received from 63 % of customers. It should be mentioned that all responses are given by Railway Undertakings.

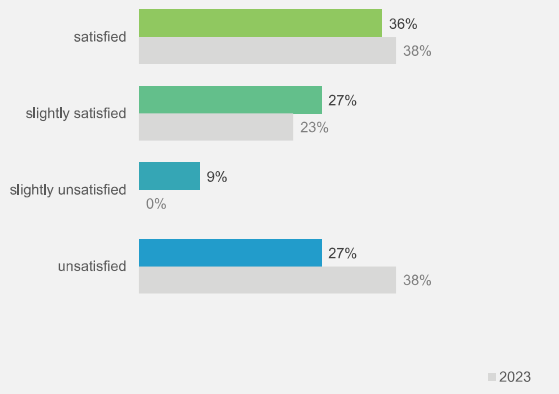
OVERALL SATISFACTION WITH RFC 10

- » Overall, how satisfied are you as a user of the RFC?
- » Answered by: RUs/non-RUs, Terminals/Ports
- » sample size = 11

63%
Generally satisfied

*Answers given were satisfied and slightly satisfied.

2%
Increase of satisfaction



UIF #K vha#Kd#d#v#q#b#ayh | #6357#UIF #3#H#s#r#u#l# 5 :

Feedback concerning specific topics shows the need for attention in the following areas: temporary capacity restrictions and commercial offer.

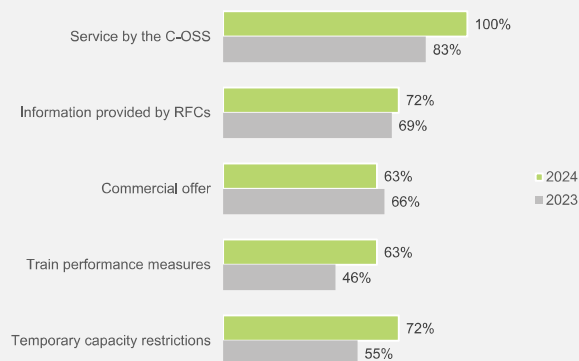
SUMMARY – SATISFACTION RATING

All respondents

- » Only fully satisfaction rates considered (not slightly satisfied)
- » Answered by: RUs/non-RUs, Terminals/Ports
- » Different sample sizes on some topics

Most satisfactory topics

Service by the C-OSS
Information provided by RFCs



UIF #K vha#Kd#d#v#q#b#ayh | #6357#UIF #3#H#s#r#u#l# 5 :

All respondents

All respondents

- ### Least satisfactory topics

Measure	2023 (%)	2024 (%)
Temporary capacity restrictions	41%	27%
Commercial offer	34%	36%
Train performance measures	8%	9%
Information provided by RFCs	31%	27%
Service by the C-OSS	16%	0%